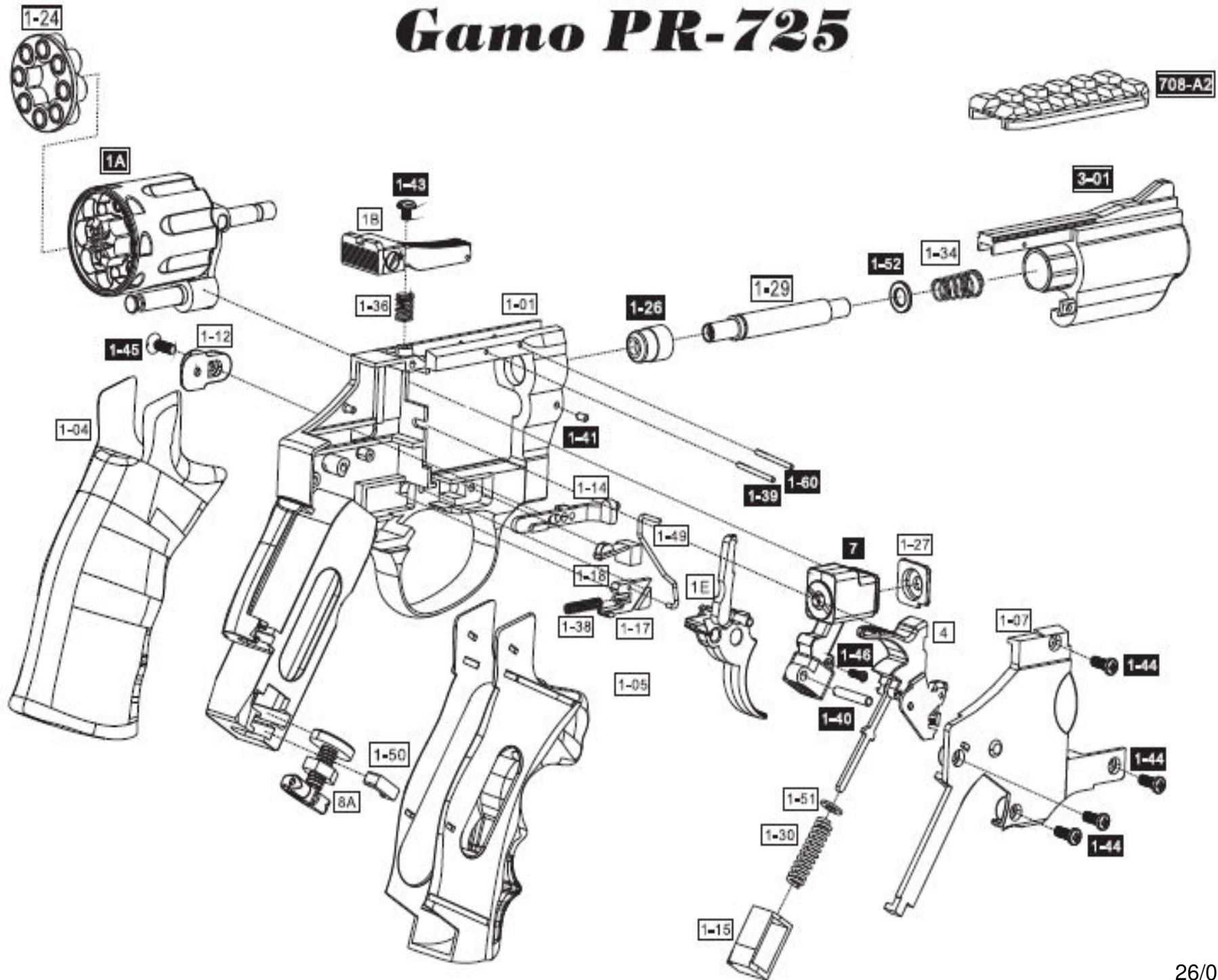


Gamo PR-725



GAMO Item#	PARTS NO.	DESCRIPTION	QTY	GAMO Item#	PARTS NO.	DESCRIPTION	QTY
PR776-1-01	1-01	FRAME	1	PR776-1-46	1-46	SCREW 2x6	1
PR776-1-07	1-07	FRAME COVER	1	PR776-1-49	1-49	SAFETY SPRING	1
PR776-1-12	1-12	SAFETY	1	PR776-1-50	1-50	KNOB FIXING BLOCK	1
PR776-1-14	1-14	SAFETY LEVEL	1	PR776-1-51	1-51	PUSHER SPRING STOPPER	1
PR776-1-15	1-15	HAMMER SPRING SEAT	1	PR725-3-01	3-01	OUTER BARREL	1
PR776-1-17	1-17	TRIGGER CONNECTOR	1	PR776-1C	1C	DRUM COMBINATION	1
PR776-1-18	1-18	MAG. STOPPER	1	PR776-1E	1E	TRIGGER COMBINATION	1
PR776-1-24	1-24	ROLLING CHIP	1	PR776-4	4	HAMMER COMBINATION	1
PR776-1-26	1-26	BARREL ADAPTER	1	PR776-7	7	HAMMER COMBINATION	1
PR776-1-27	1-27	VALVE SEAL	1	PR776-8A	8A	PIERCER COMBINATION	1
PR725-1-29	1-29	INTERNAL BARREL	1	PR725-1-03	1-03	8 SHOTS DRUM	1
PR776-1-30	1-30	HAMMER PUSHER SPRING	1	PR725-1-06	1-06	DRUM SEAT	1
PR776-1-34	1-34	INTERNAL BARREL SPRING	1	PR725-1-11	1-11	AXIAL GEAR	1
PR776-1-36	1-36	REAR SIGHT SPRING	1	PR725-1-19	1-19	WASHER	1
PR776-1-38	1-38	TRIGGER CONNECTOR SPRING	1	PR725-1-21	1-21	FRAME	1
PR776-1-39	1-39	SPRING BAR 1.5x18	1	PR725-1-22	1-22	FIXING CENTRAL AXLE	1
PR776-1-40	1-40	AXIS 3x17.5	1	PR725-1-31	1-31	AXIAL SPRING	1
PR776-1-41	1-41	AXIS 2.2x5.5	1	PR725-1-32	1-32	DRUM SPRING	1
PR776-1-43	1-43	SCREW 3x7.2	1	PR776-1B	1B	SIGHT COMBINATION	1
PR776-1-44	1-44	SCREW 3x8	4	PR776-GRIP	1-04 & 1-05	GRIP COMBINATION	1
PR776-1-45	1-45	SCREW 3x8	1				